

EQUIP. TYPE R390A/URR EXP. NO.

60c 586-3120, 3132-001

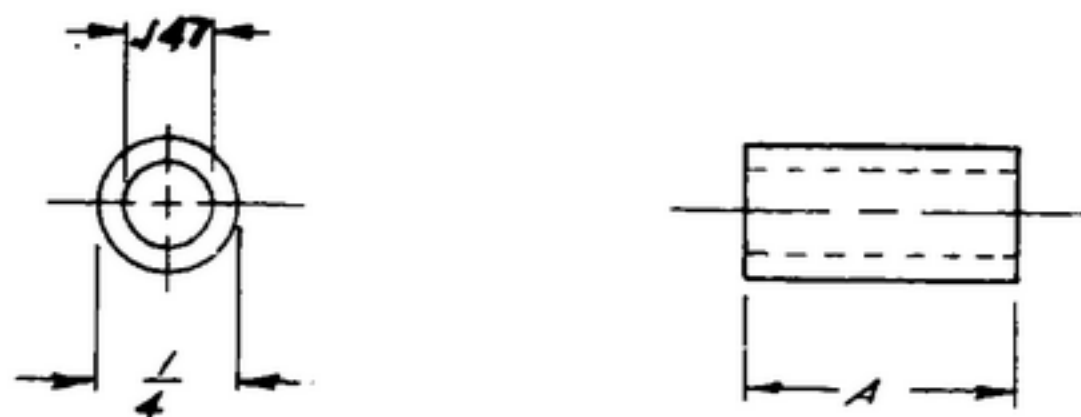
NOTICE: WHEN GOVERNMENT DRAWINGS, SPECIFICATIONS, OR OTHER DATA ARE USED FOR ANY PURPOSE OTHER THAN IN CONNECTION WITH A DEFINITELY RELATED GOVERNMENT PROCUREMENT OPERATION, THE UNITED STATES GOVERNMENT THEREBY INCURS NO RESPONSIBILITY FOR ANY DELAYATION WHATSOEVER, AND THE FACT THAT THE GOVERNMENT MAY HAVE FORMULATED, FURNISHED, OR IN ANY WAY SUPPLIED THE SAID DRAWINGS, SPECIFICATIONS, OR OTHER DATA IS NOT TO BE REGARDED AS IMPLICATION OR OTHERWISE AS IN ANY MANNER LICENSING THE HOLDER OR ANY OTHER PERSON OR CORPORATION, OR CONVEYING ANY RIGHTS OR PERMISSION TO MANUFACTURE, USE, OR SELL ANY PATENTED INVENTION THAT MAY IN ANY WAY BE RELATED THERETO.

THIS DOCUMENT HAS BEEN PURCHASED BY THE GOVERNMENT AND MAY BE REPRODUCED AND USED IN CONNECTION WITH ANY GOVERNMENT PROCUREMENT OR MAINTENANCE OPERATION.

\* FOR INFORMATION ONLY, CONTRACTOR MAY AT HIS OPTION DEVIATE FROM THESE PROCESS DETAILS.

REVISIONS

SYM	DESCRIPTION	DATE	APPROVAL
<del>SYMBOL APPROVAL</del>			
A <sub>2</sub>	A <sub>1</sub> - 2017 WAS 175 A <sub>2</sub> - NOTES RENUMBERED	15 OCT 59	A2428-PC-59 PME



DASH NO.	DIM "A"	COLLINS PART NO
SM-B-248825-1	0.250	558 0047 002
↓	-2 0.500	558 0048 002

- NOTES: (A<sub>2</sub>) (A<sub>1</sub>)
- MATL: ALUMINUM ALLOY 2017, TEMPER T4, PER SPEC QQ-A-351
  - FINISH: E513 PER SPEC MIL-F-14072  
\* COLLINS 586-0036-00
  - PART MUST BE FREE OF BURRS & SHARP EDGES

COLLINS PART NO.	ITEM	REQD	PART NO.	DESCRIPTION	QTY	MATL SPEC
LIST OF MATERIAL						
						COLLINS PART NO. <del>558 0048 002</del> 0047 002

DRAWN <i>Mml</i>			CHECKED <i>PK</i>			APPROVED			COLLINS RADIO CO. SEAR RAPID, IOWA 14214-PH-51-93			DEPARTMENT OF THE ARMY SIGNAL CORPS ENGINEERING LABORATORIES  PORT MONMOUTH NEW JERSEY  SM-B-248825		
UNLESS OTHERWISE SPECIFIED:									SIGNAL CORPS REVIEWED <i>PME</i> APPROVED <i>HLV</i> <i>PME</i>					
DECIMAL DIMENSIONS INCLUDING HOLE SIZES MAY VARY ±.008														
FRACTIONAL DIMENSIONS INCLUDING HOLE SIZES MAY VARY ±1/64														
MACHINED ANGLES MAY VARY ±1°									SPACER - ROUND					
SHEARED ANGLES MAY VARY ±.25°														
BROKEN ANGLES MAY VARY ±1°									SCALE: NONE					
ECCENTRICITY BETWEEN ANY DIAMETERS ON THE SAME CENTERLINE SHALL NOT EXCEED .010 TOTAL INDICATOR READING.														
ALL DIMENSIONS ARE FINISH DIMENSIONS INCLUDING APPLIED FINISH AND ARE GIVEN IN INCHES.														
APPLICATION			DATE 2 DEC 55											